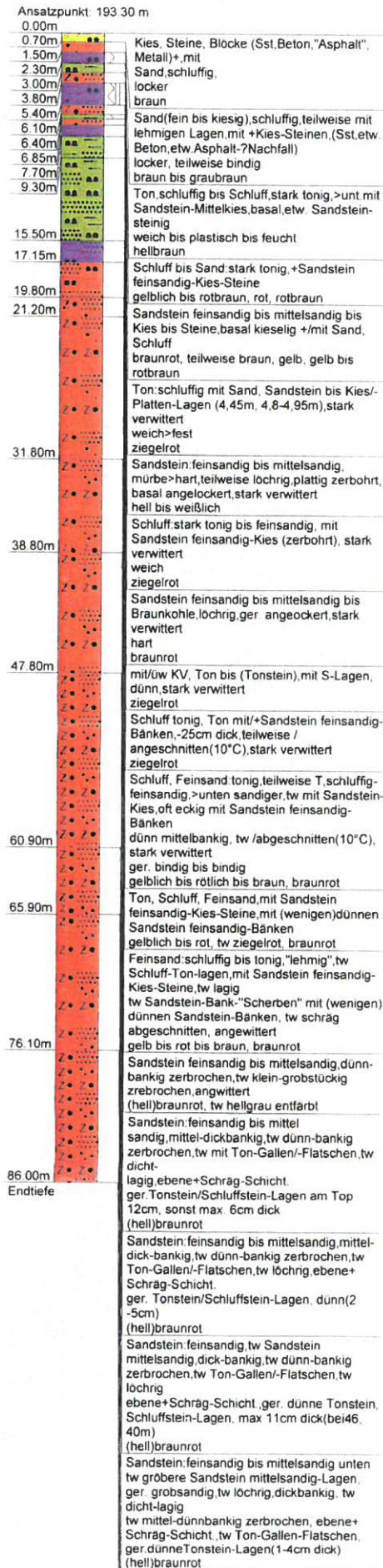
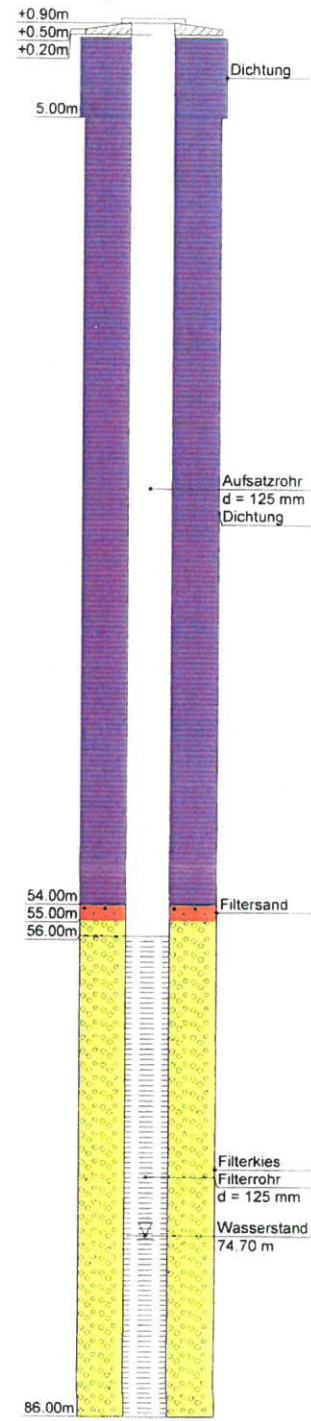


Ber. Ingenieure u. Geologen BDG	Projektnr.: 06 007 AL		
Am Wandberg 40 97080 Würzburg	AZ: 06 007 / G01	Bearbeiter: Krzemin	
Tel: 0931/329100 FAX: 0931/3291029	Maßstab: 1: 320 / Anlage: 3	Datum: 18.05.2006	

PB01

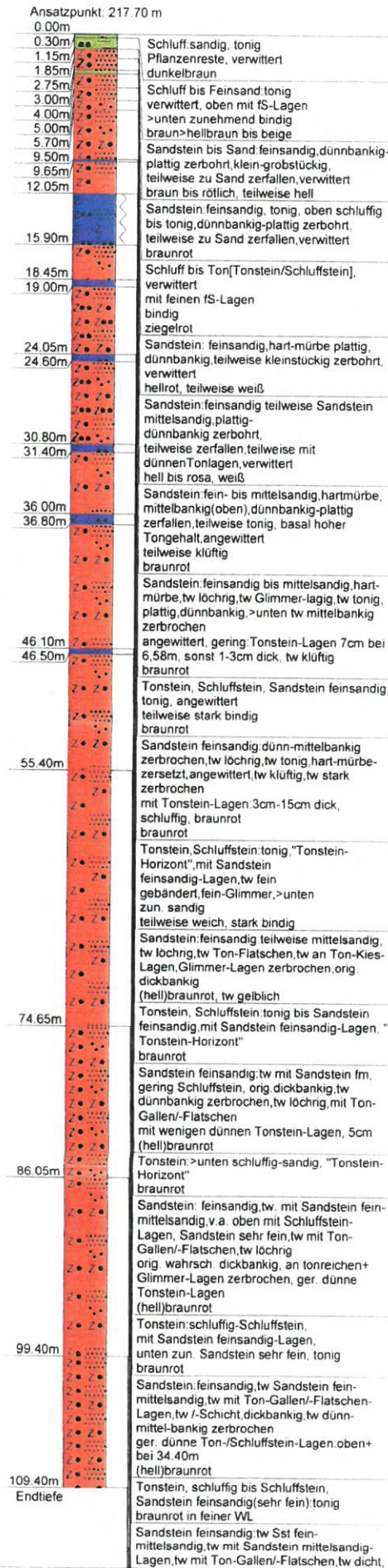


Pegelausbau

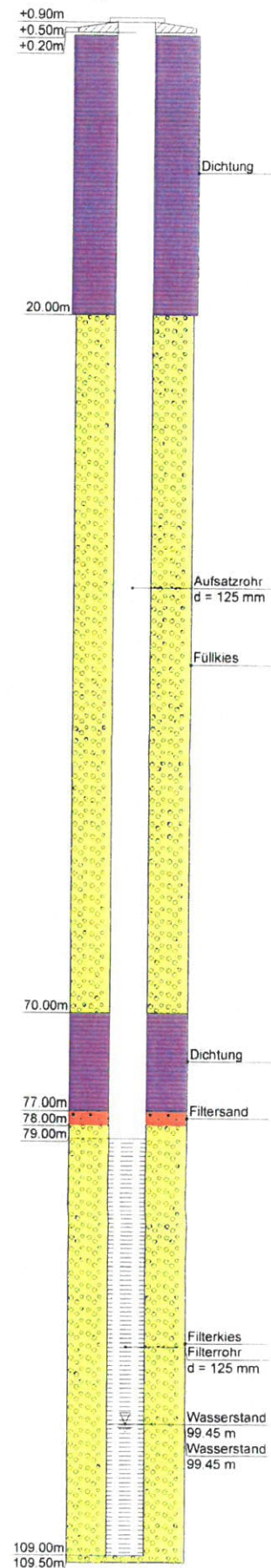


Ber. Ingenieure u. Geologen BDG	Projektnr.: 06 007 AL		
Am Wandberg 40 97080 Würzburg	AZ: 06 007 / G01	Bearbeiter:	Krzemin
Tel: 0931/329100 FAX: 0931/3291029	Maßstab : 1: 320 / Anlage : 3	Datum :	16.05.2006

PB02

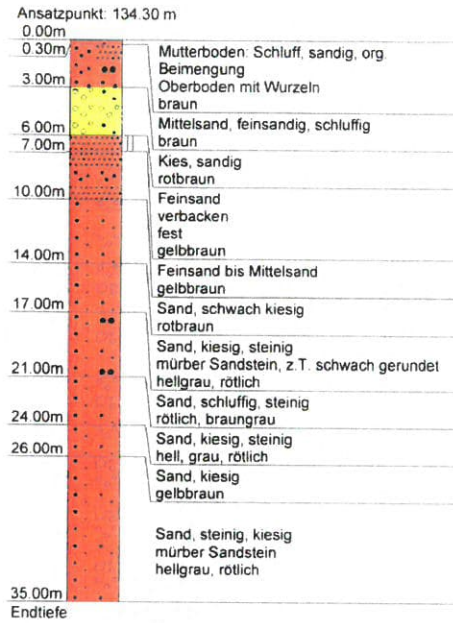


Pegelausbau

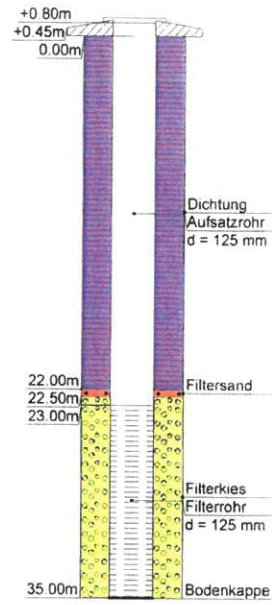


RODASILE CONSULT	Projek.	Großwallstadt			
Ber. Ingenieure u. Geologen BDG	Projektnr.:	06 007 AL			
Am Wandberg 40 97080 Würzburg	AZ:	06 007 / G01	Bearbeiter:	Krzemin	
Tel: 0931/329100 FAX: 0931/3291029	Maßstab :	1: 320 / Anlage :	3	Datum :	13.06.2006

PB03

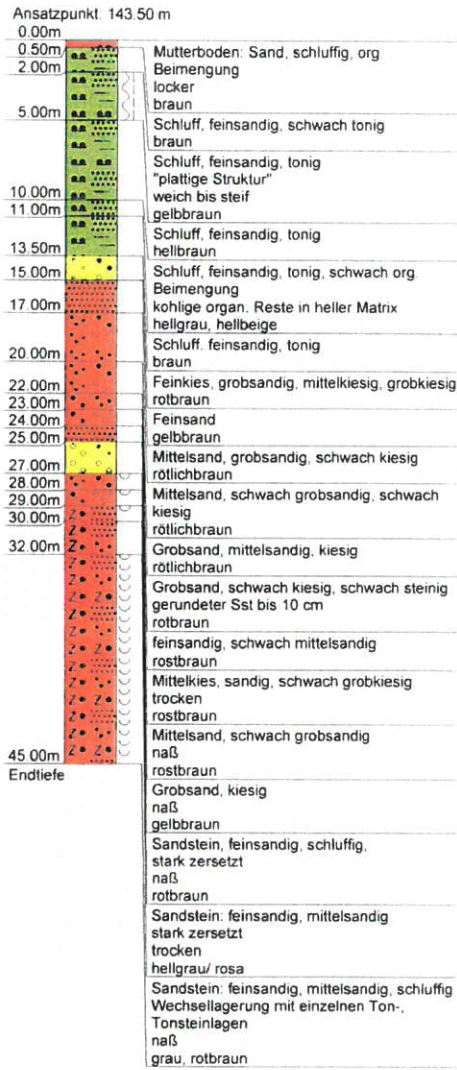


Pegelausbau

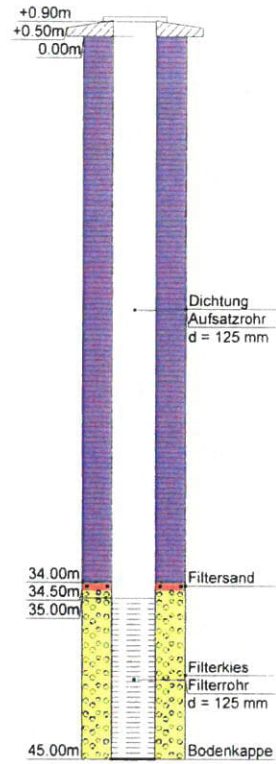


ROCK GEO CONSULT	Projek.	Großwallstadt		
Ber. Ingenieure u. Geologen BDG	Projektnr.:	06 007 AL		
Am Wandberg 40 97080 Würzburg	AZ:	06 007 / G01	Bearbeiter:	Krzemin
Tel:0931/329100 FAX:0931/3291029	Maßstab :	1: 320 / Anlage : 3	Datum :	29.05.2006

PB04

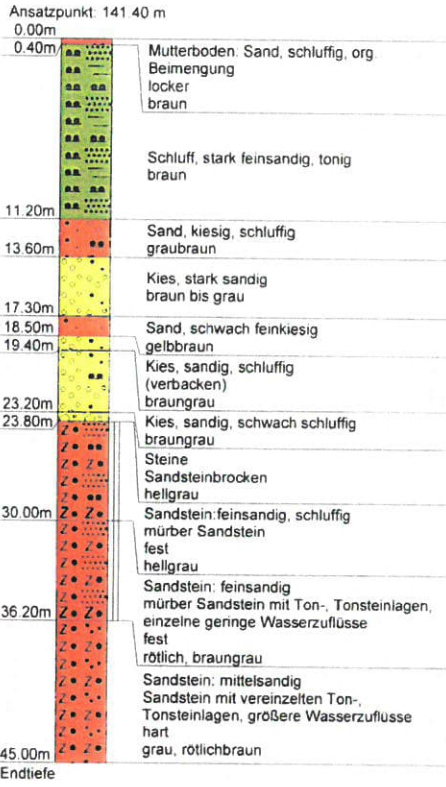


Pegelausbau



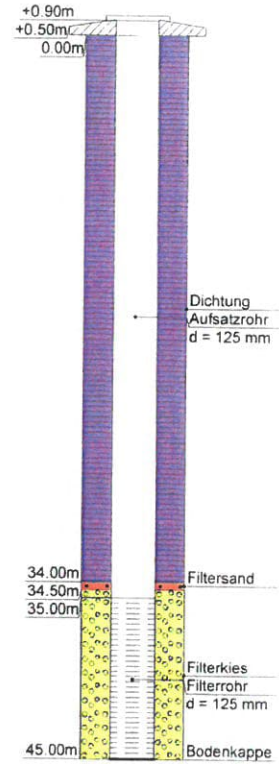
Ber. Ingenieure u. Geologen BDG Am Wandberg 40 97080 Würzburg Tel: 0931/329100 FAX: 0931/3291029	Projek. Großwallstadt Projektnr.: 06 007 AL AZ: 06 007 / G01 Maßstab: 1: 320 / Anlage: 3	Bearbeiter: Krzemin Datum: 06.06.2006
--	---	--

PB05



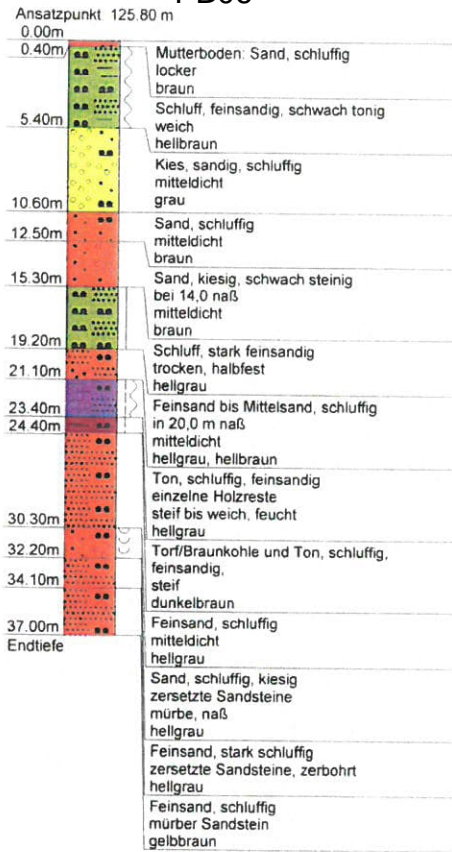
GW ▼ 26.10m
(09.06.06)

Pegelausbau

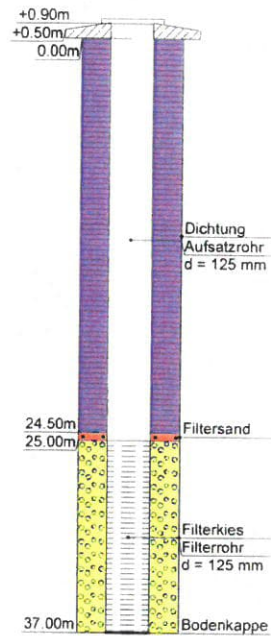


ROSBLE CONDUIT	Projek.	Großwallstadt		
Ber. Ingenieure u. Geologen BDG	Projektnr.:	06 007 AL		
Am Wandberg 40 97080 Würzburg	AZ:	06 007 / G01	Bearbeiter:	Krzemin
Tel.0931/329100 FAX:0931/3291029	Maßstab :	1: 320 / Anlage : 3	Datum :	21.06.2006

PB06



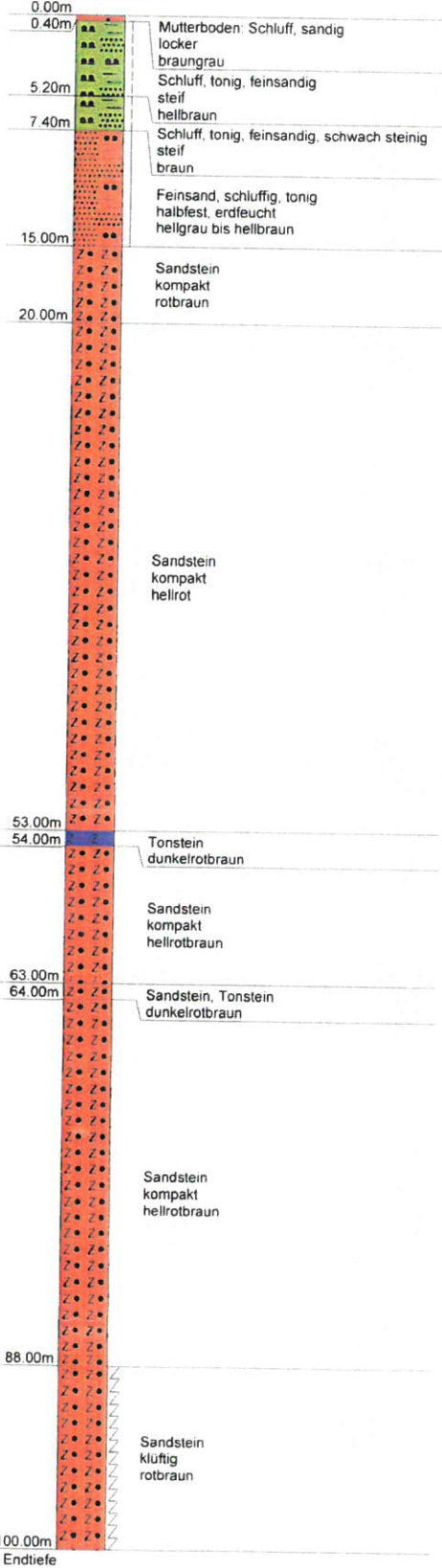
Pegelausbau



Ber. Ingenieure u. Geologen BDG	Projektnr.: 06 007 AL	Bearbeiter:	Krzemin
Am Wandberg 40 97080 Würzburg	AZ: 06 007 / G01	Maßstab:	1: 320 / Anlage: 3
Tel: 0931/329100 FAX: 0931/3291029		Datum:	22.08.2006

PB07

Ansatzpunkt 203,25 m



GW ▽ 84.70m
(22.08.2006)17h

GW ▽ 88.00m
(22.08.2006)14h

Pegelausbau

